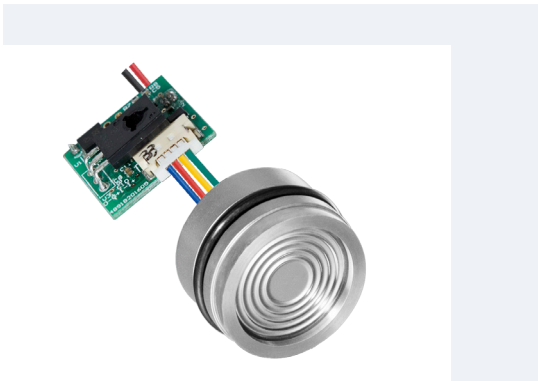


# MPM4891B Pressure Transmitter

## Specifications

Range	0bar~0.1bar...400bar
Over pressure	1.5FS
Pressure type	Gauge, Absolute or Sealed Gauge
Accuracy	±0.5%FS
Power Supply	11V~28V DC
Output	4mA~20mA DC (2-wire)
Load Resistance	≤ (U-11) / 0.02(Ω)
Zero Thermal Drift	±0.02%FS/°C
FS Thermal Drift	±0.02%FS/°C
Long-term Stability	±0.3%FS/year
Operation Temperature	-25°C ~75°C
Storage Temperature	-40°C ~80°C
Relative Humidity	0%~85%
O-ring	Viton
Diaphragm	SS316L
Leading Wire	silicone rubber
Gross Weight	22g
Media Compatibility	liquid or gas compatible with stainless steel and viton



## Features

- Safe, reliable
- Short circuit protection and reversed polarity protection
- 2-wire current output
- Manual zero-clearing function
- Manual secondary calibration
- Compact size, easy installation

## Introduction

MPM4891B is newly developed pressure transmitter parts with high accuracy and stability. It is made up of piezo-resistive pressure sensor and specialized processing circuit. It is stable, reliable, compact in size. With zero clearing button and manual pressure calibration function, it is easy for operation. MPM4891B is with OEM package, suitable for application and development for various pressure transmitter.

## Button Function

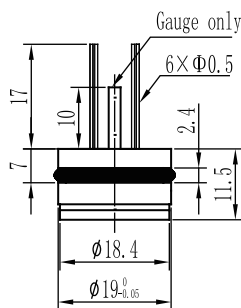
- Without pressure, press the button for 5s for zero clearing, it outputs 4mA DC.
- If the transmitter is excited while pressing the button, it enters calibration mode, the output can be calibrated by LED indication. Please see below chart for functions.

## Specification

Button Operation	Phenomenon	Function
Excite power supply after pressing button	LED light on	Enter calibration mode
Pressurize to lower limit of pressure	LED flash 2 times	Zero calibration finished, low current calibration finished
Pressurize to upper limit of pressure	LED flash 3 times	FS calibration finished, middle current calibration finished
Pressurize to upper limit of pressure	LED flash 4 times	Calibration coefficient storage finished, high current calibration finished

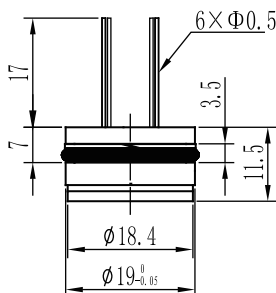
## Outline Construction (Unit: mm)

Range ≤ 35bar



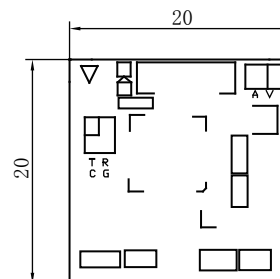
Suggested mounting dimension is  $\Phi 19^{+0.05}_{+0.02}$  mm

Range ≥ 70bar



Suggested mounting dimension is  $\Phi 19^{+0.05}_{+0.02}$  mm

Circuit:



Electrical connection:

Red: +V

Black: 0V/+OUT

## Order Guide

MPM4891B		Pressure Transmitter			
		Range	0bar~0.1bar...400bar		
		[0~X] bar	X: actual measurement range		
		Code	Output		
		E	4mA~20mA DC (2-wire)		
		Code	Construction Material		
		22	SS316L		
		Code	Pressure Type		
		G	Gauge		
		S	Sealed Gauge		
		A	Absolute		
MPM4891B	[0~2]bar	E	22	G	the whole spec.

### Notes

1. Please pay attention to protect sensor isolated diaphragm to avoid damaging the sensor or affecting the performance.
2. Please make sure the measured media shall be compatible with the contacting material.
3. If users have special requirement, please contact us freely.